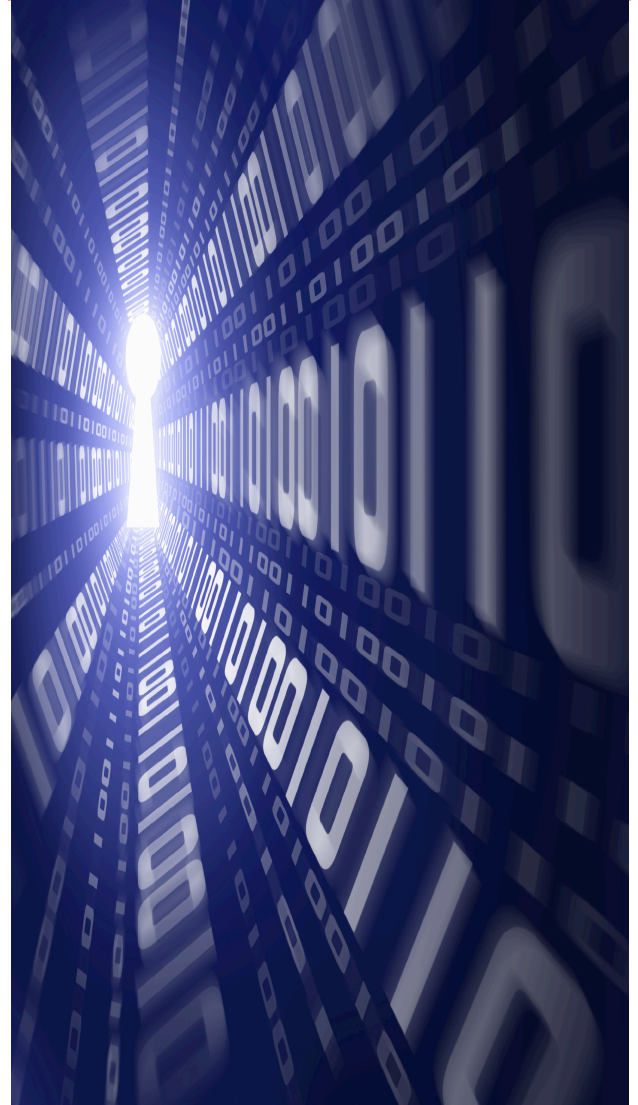


## Course Prerequisites

All course prerequisites require a grade of C or better.

Before You Take...	You Have To Take:
<b>CSC 104</b>	All required remediation
<b>CSC 120</b>	All required remediation <i>and:</i> <b>CSC 104</b> <i>or</i> <b>MAT 111</b> <i>or</i> prior programming experience <i>or</i> departmental permission
<b>CSC 130</b>	<b>CSC 120</b>
<b>CSC 217</b>	<b>CSC 130</b> <i>or</i> <b>ITE 204</b>
<b>CSC 230</b>	<b>CSC 130</b>
<b>CSC 240</b>	<b>CSC 130</b> <i>or</i> departmental permission
<b>CSC 250</b>	<b>CSC 130</b>
<b>CSC 260</b>	Take <b>CSC 250</b> first, <i>or</i> at the same time
<b>ITE 101</b>	All required remediation
<b>ITE 153</b>	<b>ITE 101</b>
<b>ITE 154</b>	<b>ITE 101</b> <i>and</i> <b>CSC 104</b>
<b>ITE 204</b>	<b>ITE 154</b>
<b>ITE 213</b>	<b>ITE 101</b> <i>or</i> <b>CMP 103</b>
<b>ITE 223</b>	<b>ITE 153</b>
<b>ITE 252</b>	<b>ITE 101</b> <i>and</i> <b>CSC 104</b>
<b>ITE 253</b>	<b>ITE 223</b>
<b>ITE 254</b>	<b>ITE 204</b>
<b>ITE 264</b>	Take <b>ITE 204</b> <i>or</i> <b>CMP 219</b> first, <i>and</i> take <b>ITE 252</b> first <i>or</i> at the same time
<b>MAT 122</b>	<b>MAT 111</b> <i>or</i> <b>MAT 117</b> <i>or</i> a high school Math average of 75 <i>or</i> better
<b>MAT 123</b>	<b>MAT 122</b>
<b>MAT 131</b>	<b>MAT 123</b>
<b>MAT 200</b>	<b>MAT 123</b>
<b>MAT 241</b>	<b>MAT 122</b>
<b>MAT 226</b>	<b>MAT 225</b>
<b>MAT 234</b>	<b>MAT 225</b>
<b>MAT 235</b>	<b>MAT 225</b>

## Computer Science and Information Technology at Nassau Community College



Not just job training.  
Career training.



## A.A.S. in Information Technology

<b>First Semester</b>	<b>Credits</b>
<b>ITE 101</b> Introduction to Information Technology	3
<b>CSC 104</b> Programming Logic & Problem Solving	3
<b>Math Elective</b> MAT 102 or higher	3-4
<b>ENG 101</b> Composition 1	3
<b>Business/Accounting Elective</b> See note below	3
<b>Total</b>	<b>15-16</b>

<b>Second Semester</b>	<b>Credits</b>
<b>ITE 153</b> Operating Systems Management	4
<b>ITE 154</b> Web Programming 1	3
<b>Math Elective</b> MAT 102 or higher	3-4
<b>English/Communications Course</b> ENG 102 or COM 101	3
<b>Humanities Elective</b> See explanation below	3
<b>Physical Education Activity</b>	1
<b>Total</b>	<b>17-18</b>

<b>Third Semester</b>	<b>Credits</b>
<b>ITE 213</b> Data Communications & the Internet	3
<b>ITE 223</b> Network Management	4
<b>ITE 204</b> Java Programming	4
<b>Health Elective</b> Under HED in the College Catalog	2-3
<b>Social Science Elective</b> See explanation below	3
<b>Physical Education Activity</b>	1
<b>Total</b>	<b>17-18</b>

<b>Fourth Semester</b>	<b>Credits</b>
<b>ITE 252</b> Database Management	4
<b>ITE Elective</b> See explanation below	3
<b>ITE Elective</b> See explanation below	3
<b>Social Science Elective</b> See explanation below	3
<b>Lab Science</b>	4
<b>Total</b>	<b>17</b>

**IT Degree Total** 66-69

**Information Technology Elective:** Choose from **ITE 253**, **ITE 254**, **ITE 264** (note: co-requisite of **ITE 252**), or **CMP 490**.

**Business/Accounting Elective:** Choose from **BUS 100**, **BUS 110**, **BUS 111**, **BUS 112**, **LAW 103**, **OFT 245**, or **ACC 101**.

**Humanities Elective:** Choose from African-American Studies (as listed in College Catalog), Art, Communications, English, Foreign Languages, Library, **MDC 102**, **MDC 130**, Music, Philosophy, Reading, or Theater/Dance.

**Social Science Elective:** Choose from African-American History (including **AFR 185**), Economics, Finance, Geography, History, Interdisciplinary Global Studies, Political Science, Psychology, or Sociology.

Degree requirements are subject to change with approval of new courses.  
Updated November 2011.

## A.S. in Computer Science

<b>First Semester</b>	<b>Credits</b>
<b>CSC 120</b> Computer Science 1	4
<b>MAT 122</b> Calculus 1	4
<b>ENG 101</b> Composition 1	3
<b>Social Science Elective</b> See explanation below left	3
<b>Health Elective*</b> Under HED in the College Catalog; See note below	2-3
<b>Total</b>	<b>16-17</b>

<b>Second Semester</b>	<b>Credits</b>
<b>CSC 130</b> Computer Science 2	4
<b>MAT 241</b> Discrete Mathematical Structures	3
<b>MAT 123</b> Calculus 2	4
<b>ENG 102</b> Composition 2	3
<b>Humanities Elective</b> See explanation below left	3
<b>Total</b>	<b>17</b>

<b>Third Semester</b>	<b>Credits</b>
<b>CSC 217</b> C Programming Language	3
<b>CSC 230</b> Data Structures	3
<b>Computer Science/Mathematics Elective</b> See explanation below	3-4
<b>Social Science Elective</b> See explanation below left	3
<b>PHY 151</b> Physics for Scientists and Mathematicians 1	4
<b>Physical Education Activity</b>	1
<b>Total</b>	<b>17-18</b>

<b>Fourth Semester</b>	<b>Credits</b>
<b>CSC 250</b> Computer Organization and Assembly Language Programming	4
<b>Computer Science/Mathematics Elective</b> See explanation below	3-5
<b>PHY 152</b> Physics for Scientists and Mathematicians 2	4
<b>Humanities Elective</b> See explanation below left	3
<b>Physical Education Activity</b>	1
<b>Total</b>	<b>15-17</b>

**CS Degree Total** 65-69

Students who do not qualify for **MAT 122** and **CSC 120** must seek advisement for **MAT** and **CSC** placement, and should be aware that more than four semesters may be required to complete the degree program.

\* Any **Computer Science** major who chooses a two-credit Health elective (such as **HED 201**) **must** also choose at least one elective worth four or more credits elsewhere in the program to ensure NCC's graduation requirements of at least 66 total credits.

**Computer Science/Mathematics Elective:** Choose from **CSC 240**, **CSC 260**, **MAT 131**, **MAT 200**, **MAT 225**, **MAT 226** (requires **MAT 225** prerequisite), **MAT 234** (requires **MAT 225** prerequisite), or **MAT 235** (requires **MAT 225** prerequisite).